

SQUAMISH - LILLOOET REGIONAL DISTRICT

**Map 1
Electoral Area A
Bylaw 1822-2023
Consolidated Land Use
Designation
Overview Map**

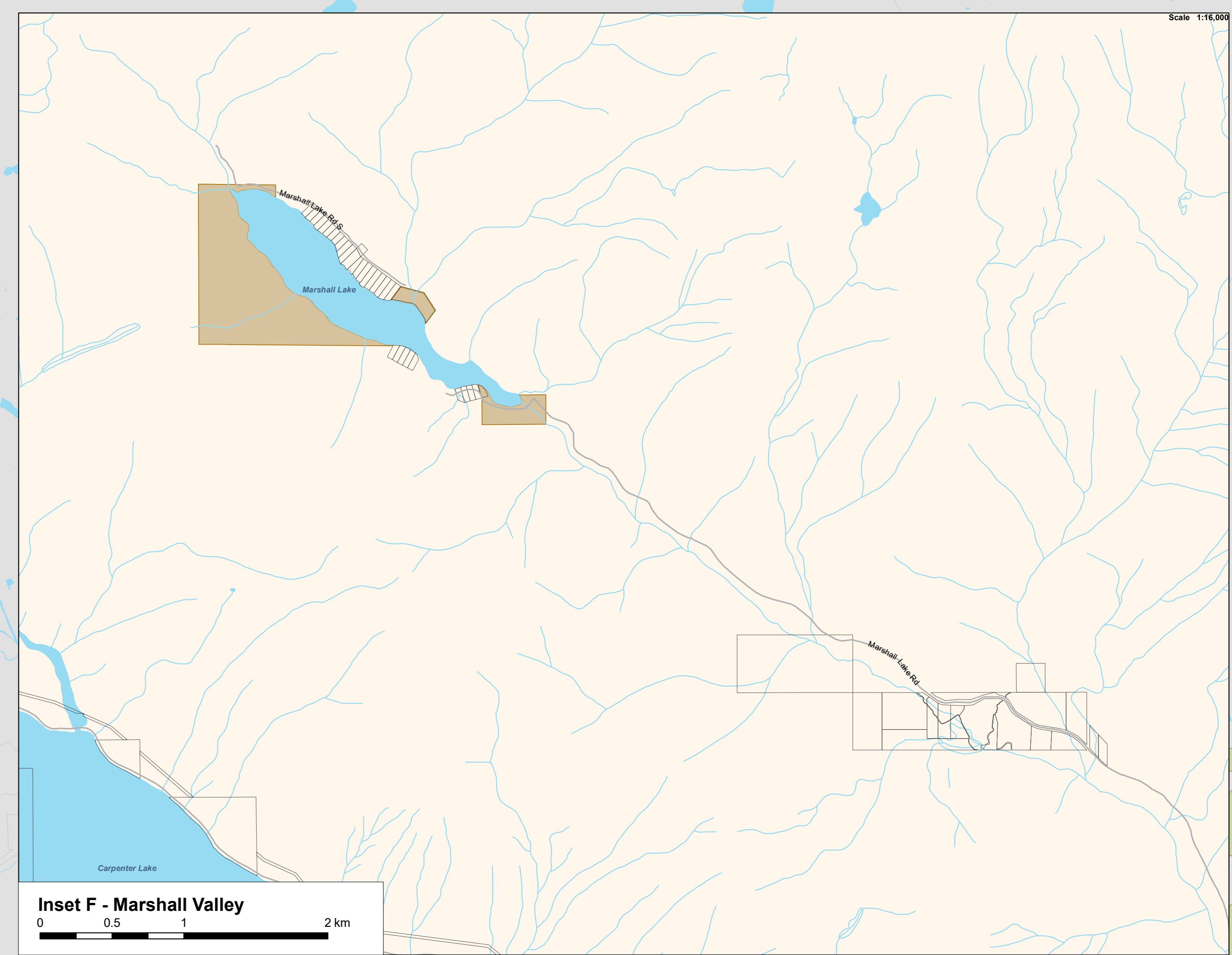
Schedule B of Squamish Lillooet Regional District OCP Bylaw No. 1822 applicable to Electoral Area A as amended. Consolidated for convenience only. This map is a representation of the Bylaw. Please refer to SLRD Planning Department for assistance with interpretation of the Bylaw.

This map has been compiled from several different sources for convenience purposes only. As such, the SLRD assumes no responsibility for its accuracy or completeness.
Date of Map Production: November 19, 2024

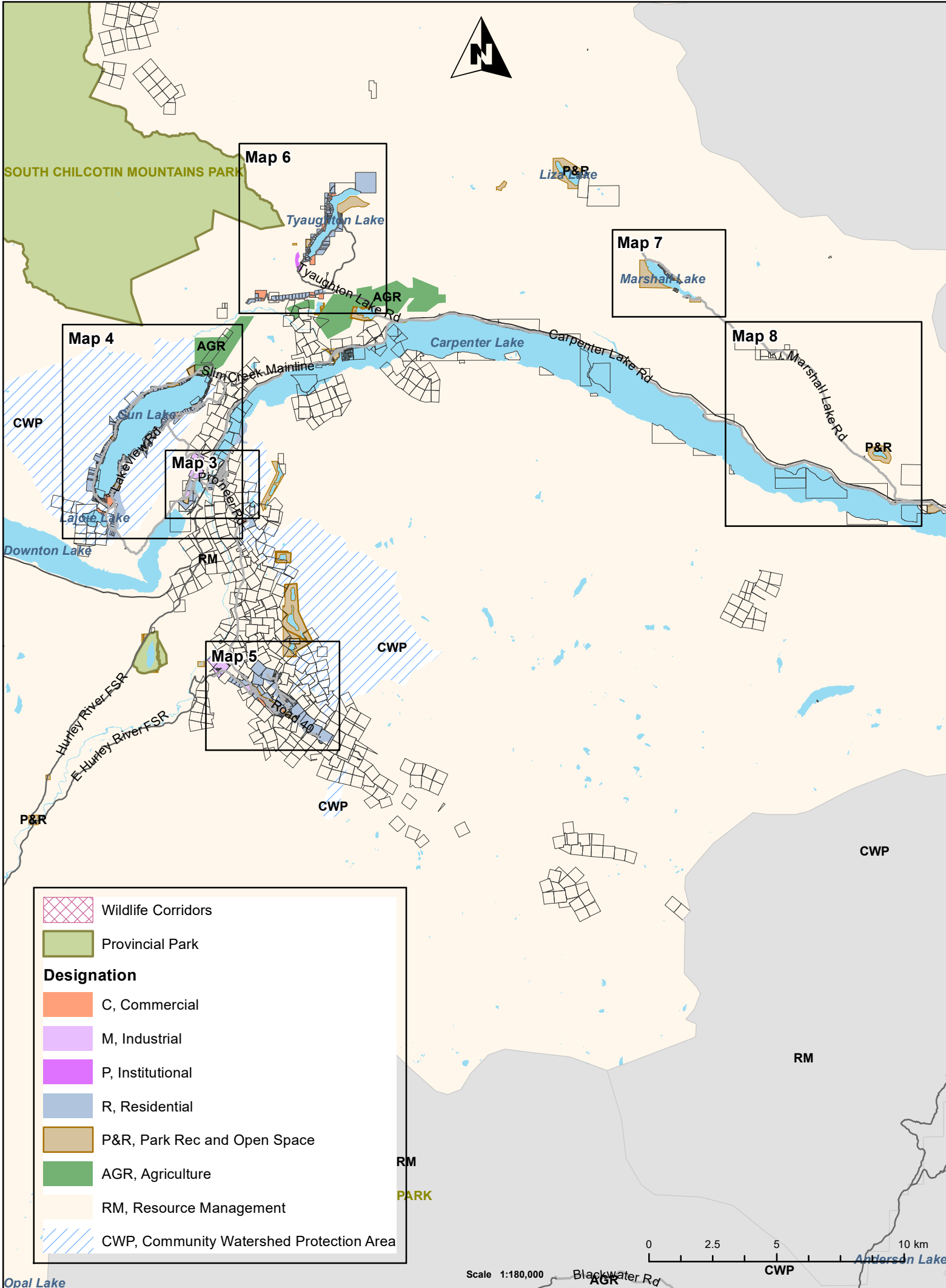
Legend

- Wildlife Corridors
- Provincial Park
- Designation**
- C, Commercial
- M, Industrial
- P, Institutional
- R, Residential
- P&R, Park Rec and Open Space
- AGR, Agriculture
- RM, Resource Management
- CWP, Community Watershed Protection Area

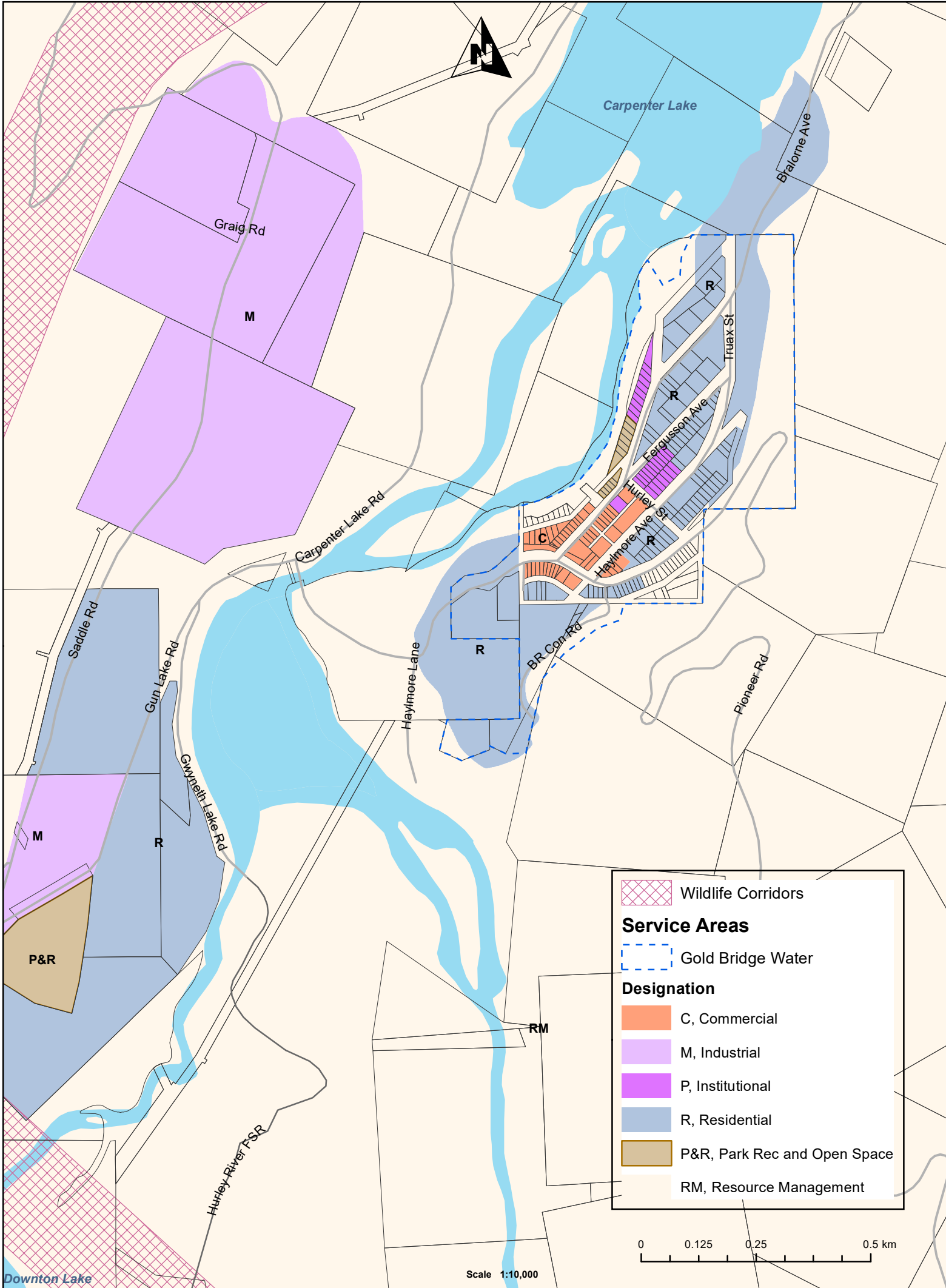
Scale: 1:100,000
0 2.5 5 10 km

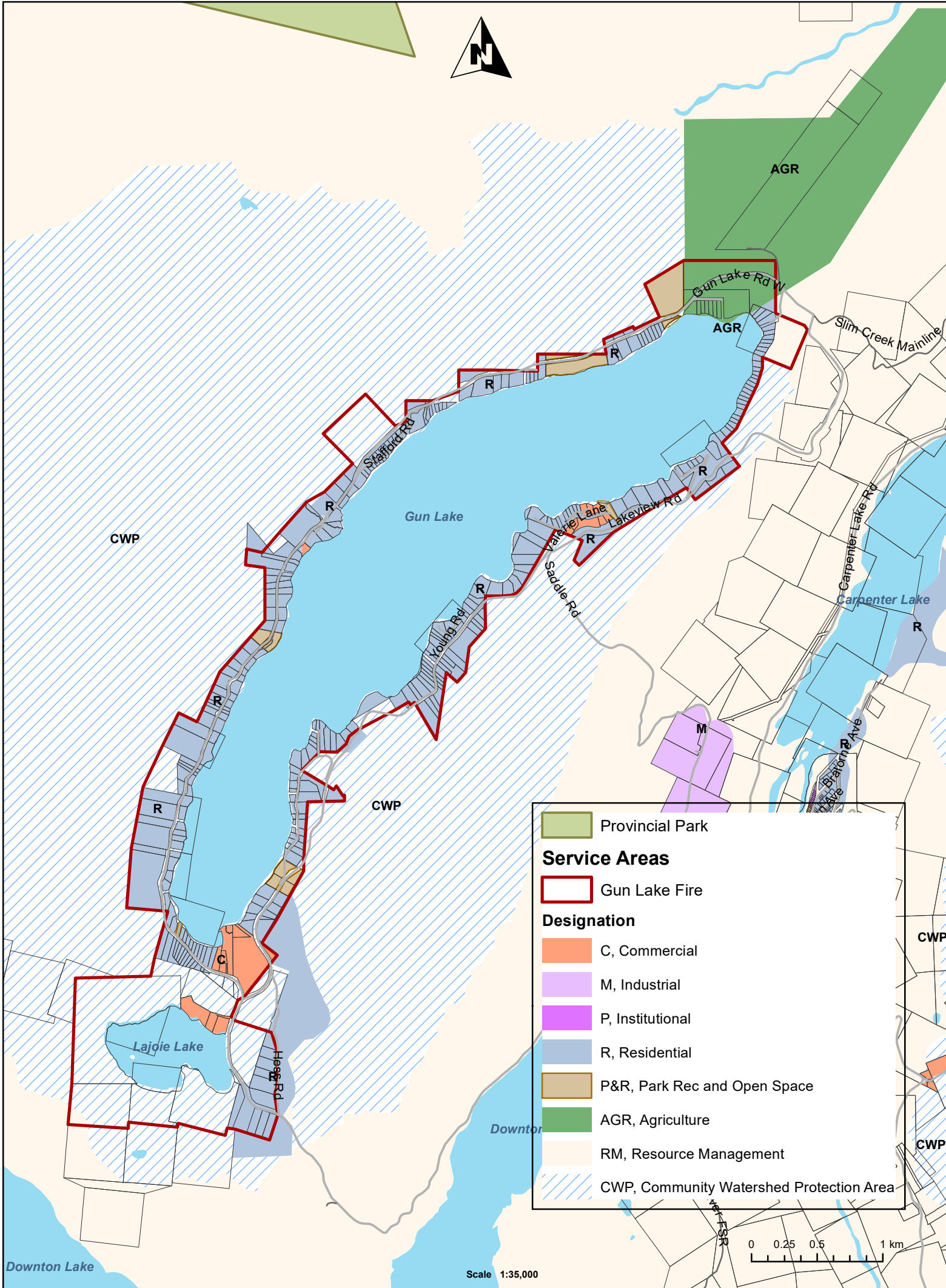


Bylaw 1822-2023 | Map 2: Neighbourhood Key Map Overview

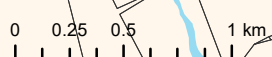


	Wildlife Corridors
	Provincial Park
Designation	
	C, Commercial
	M, Industrial
	P, Institutional
	R, Residential
	P&R, Park Rec and Open Space
	AGR, Agriculture
	RM, Resource Management
	CWP, Community Watershed Protection Area

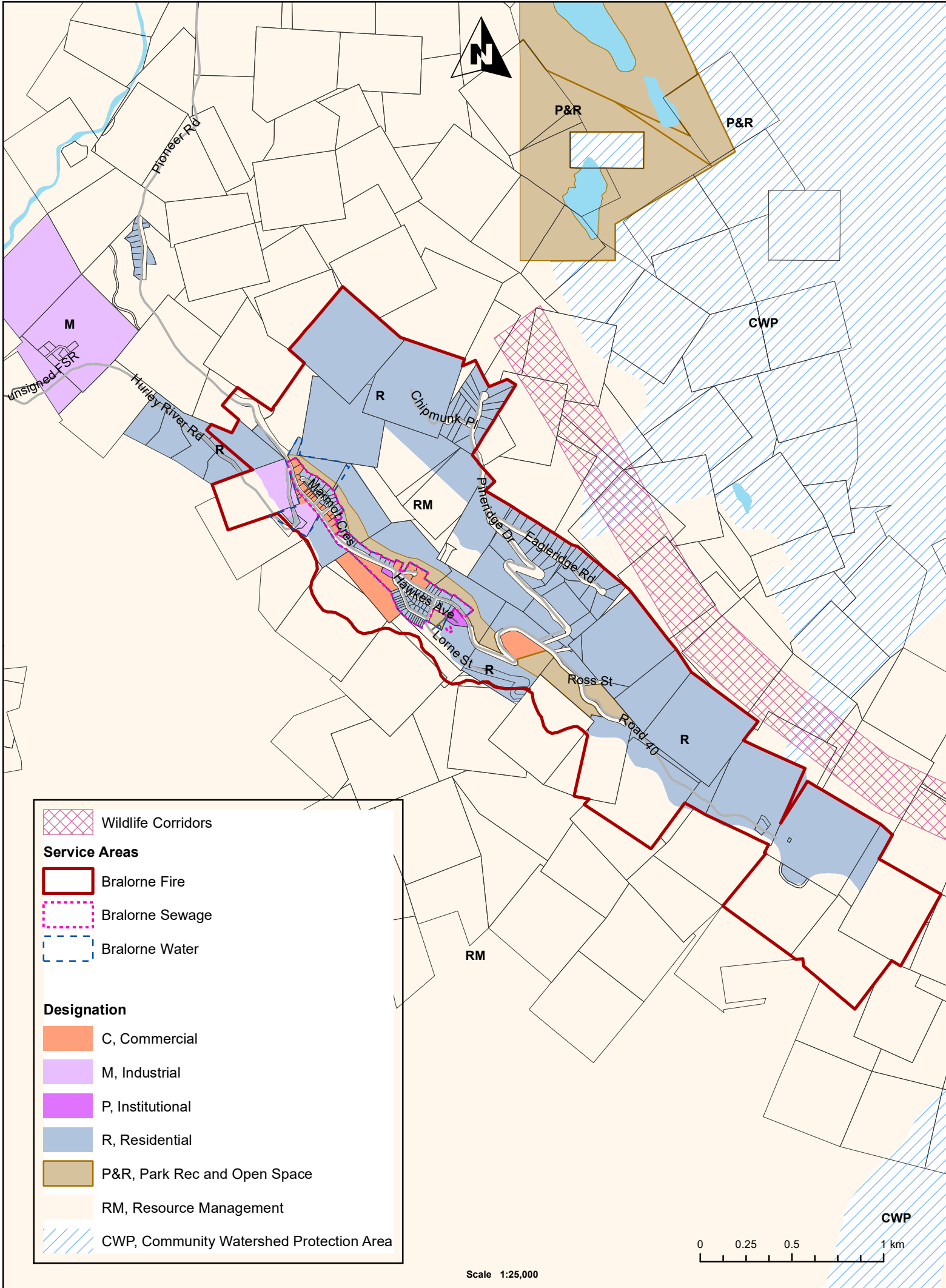


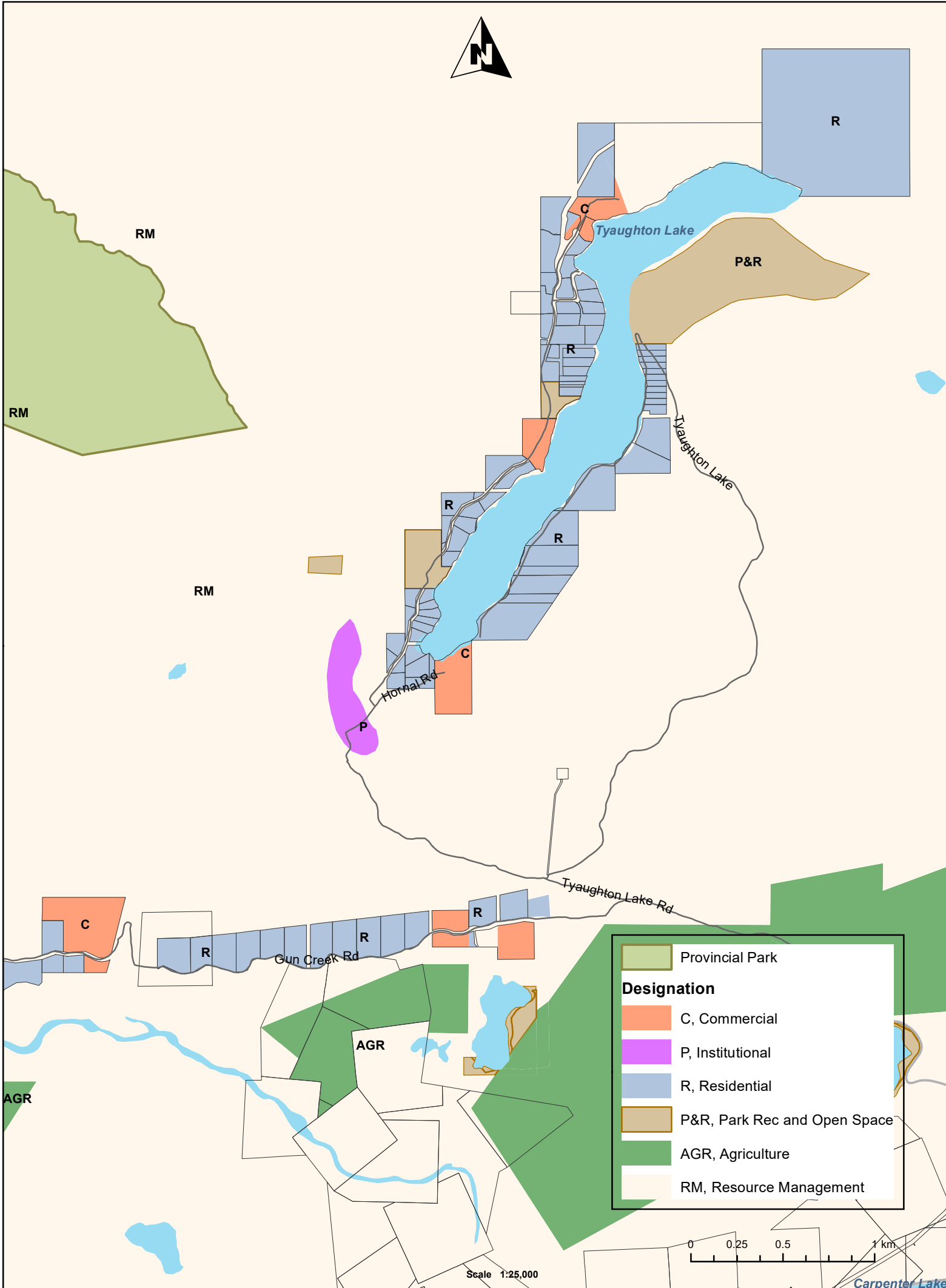


	Provincial Park
Service Areas	
	Gun Lake Fire
Designation	
	C, Commercial
	M, Industrial
	P, Institutional
	R, Residential
	P&R, Park Rec and Open Space
	AGR, Agriculture
	RM, Resource Management
	CWP, Community Watershed Protection Area

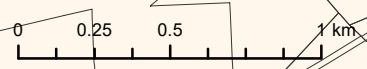


Scale 1:35,000



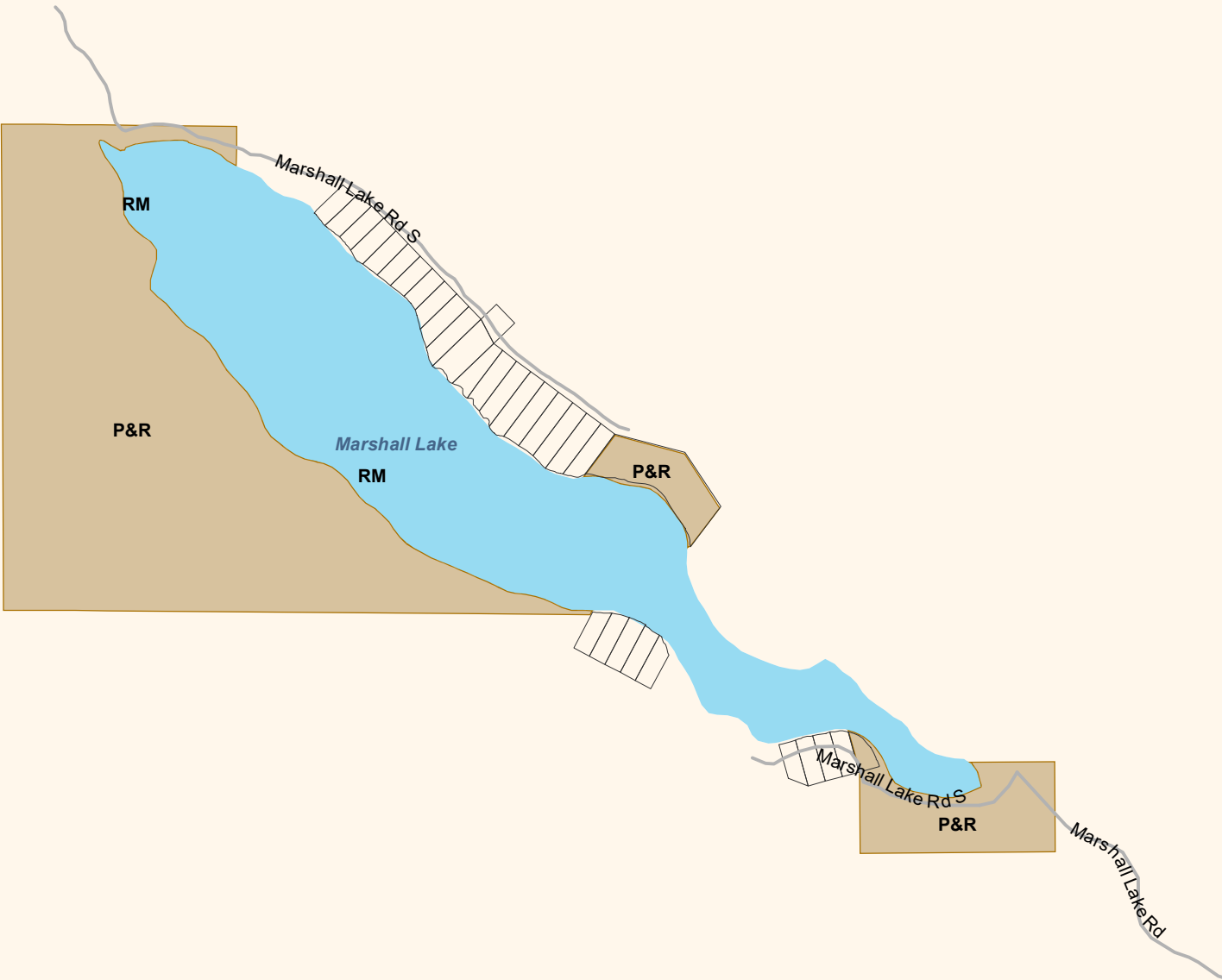


	Provincial Park
Designation	
	C, Commercial
	P, Institutional
	R, Residential
	P&R, Park Rec and Open Space
	AGR, Agriculture
	RM, Resource Management




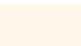
Scale 1:25,000

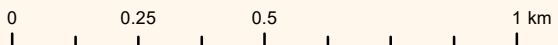
Carpenter Lake



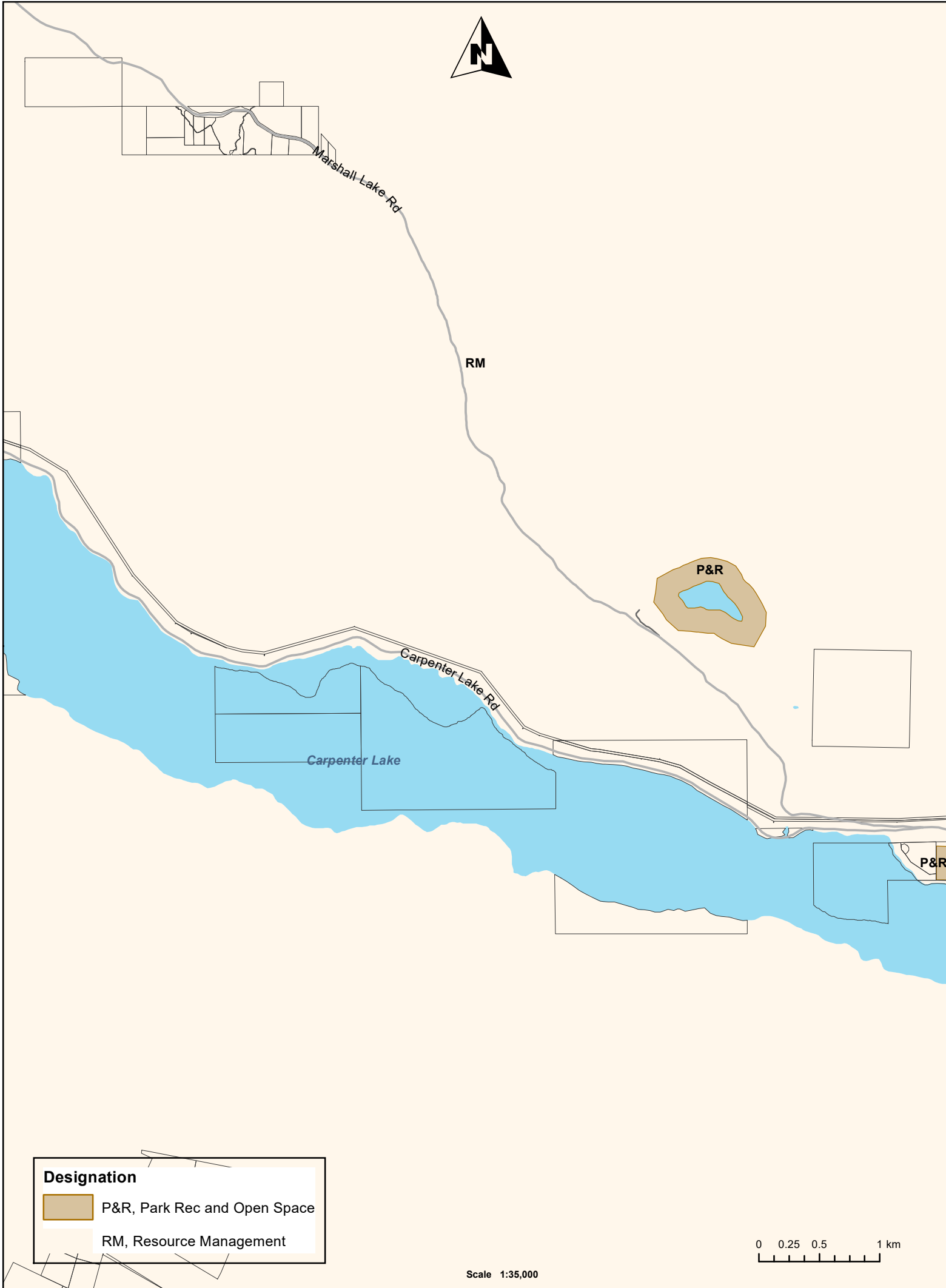
RM

Designation


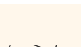
	P&R, Park Rec and Open Space
	RM, Resource Management



Scale 1:15,000

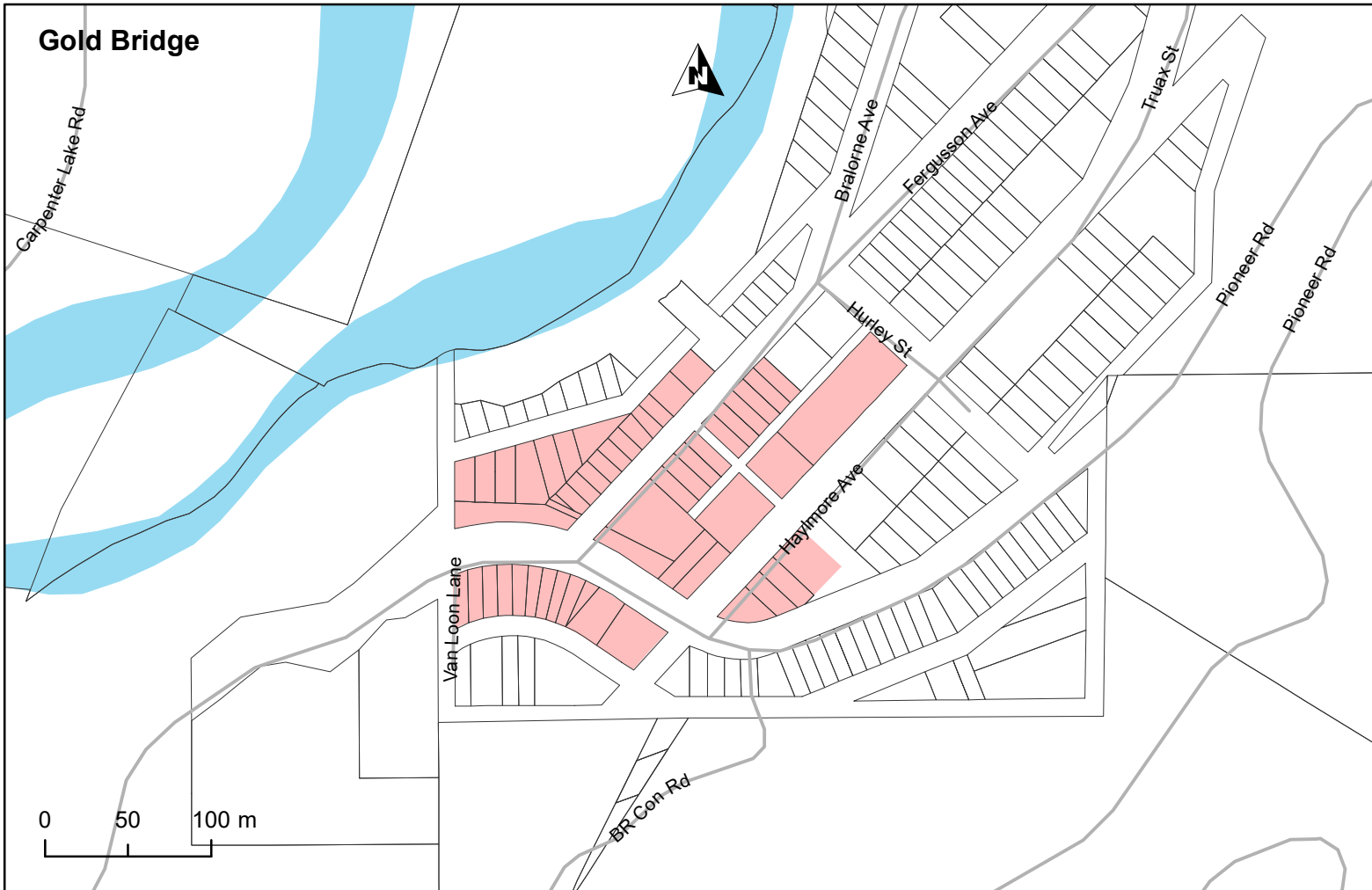


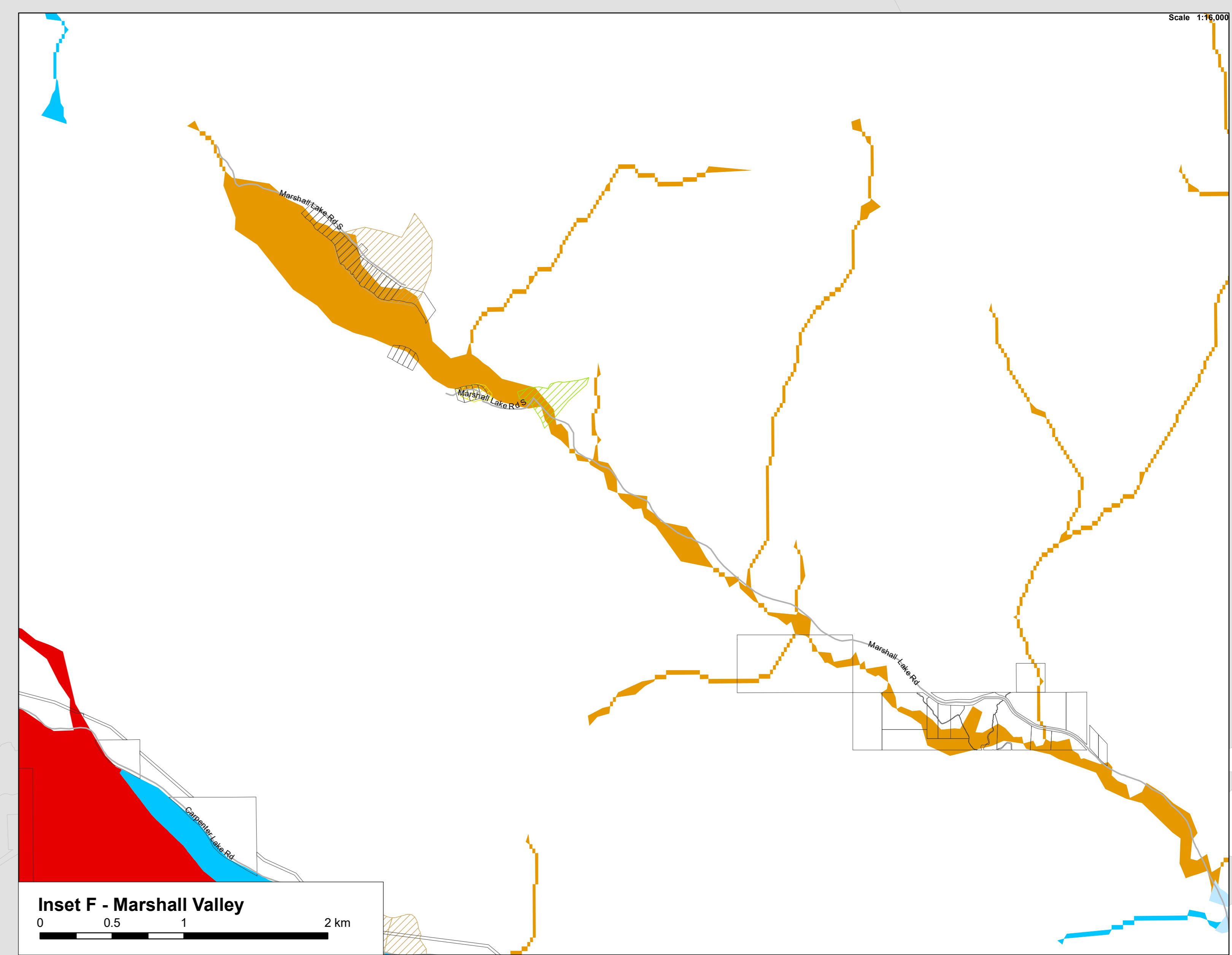
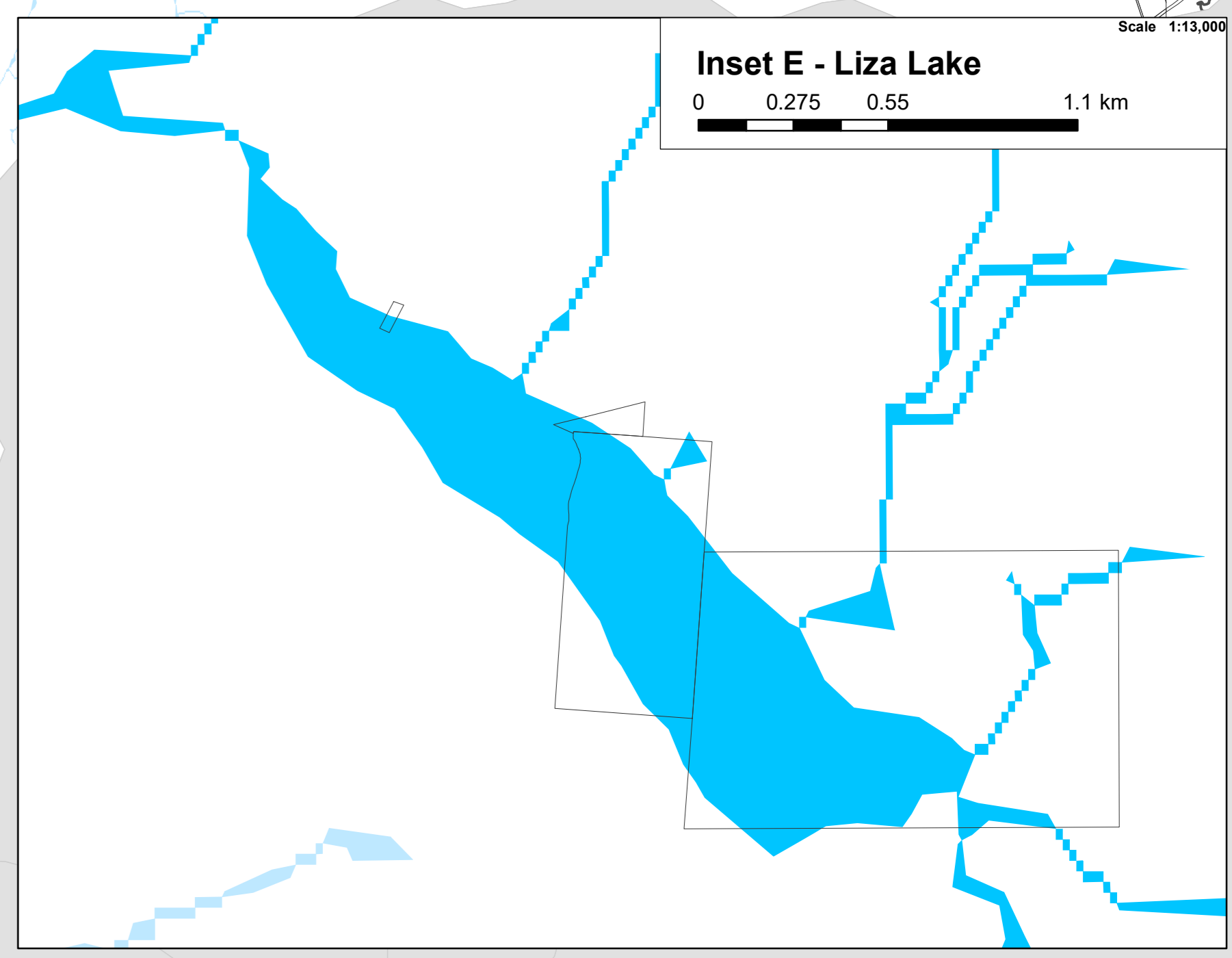
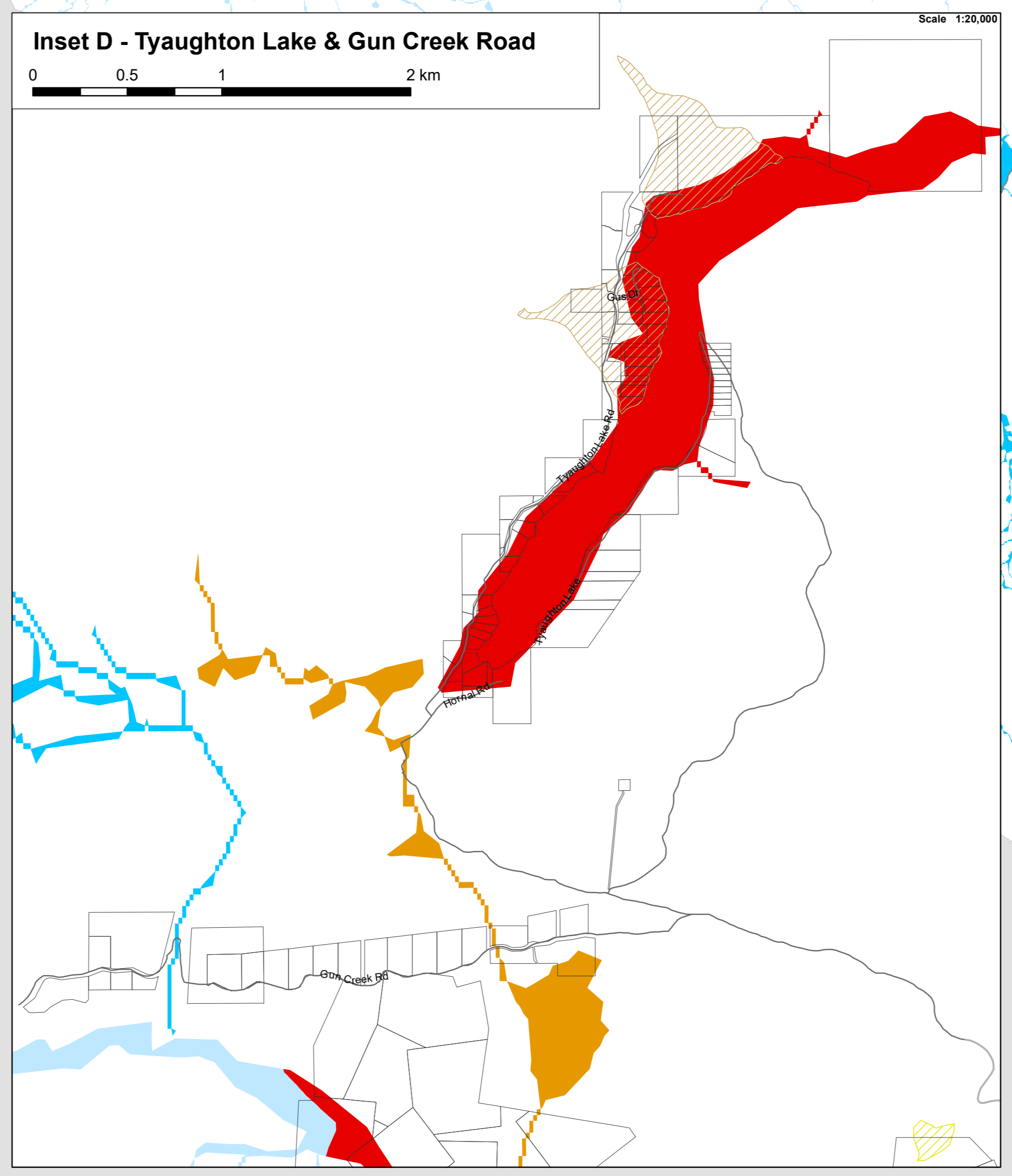
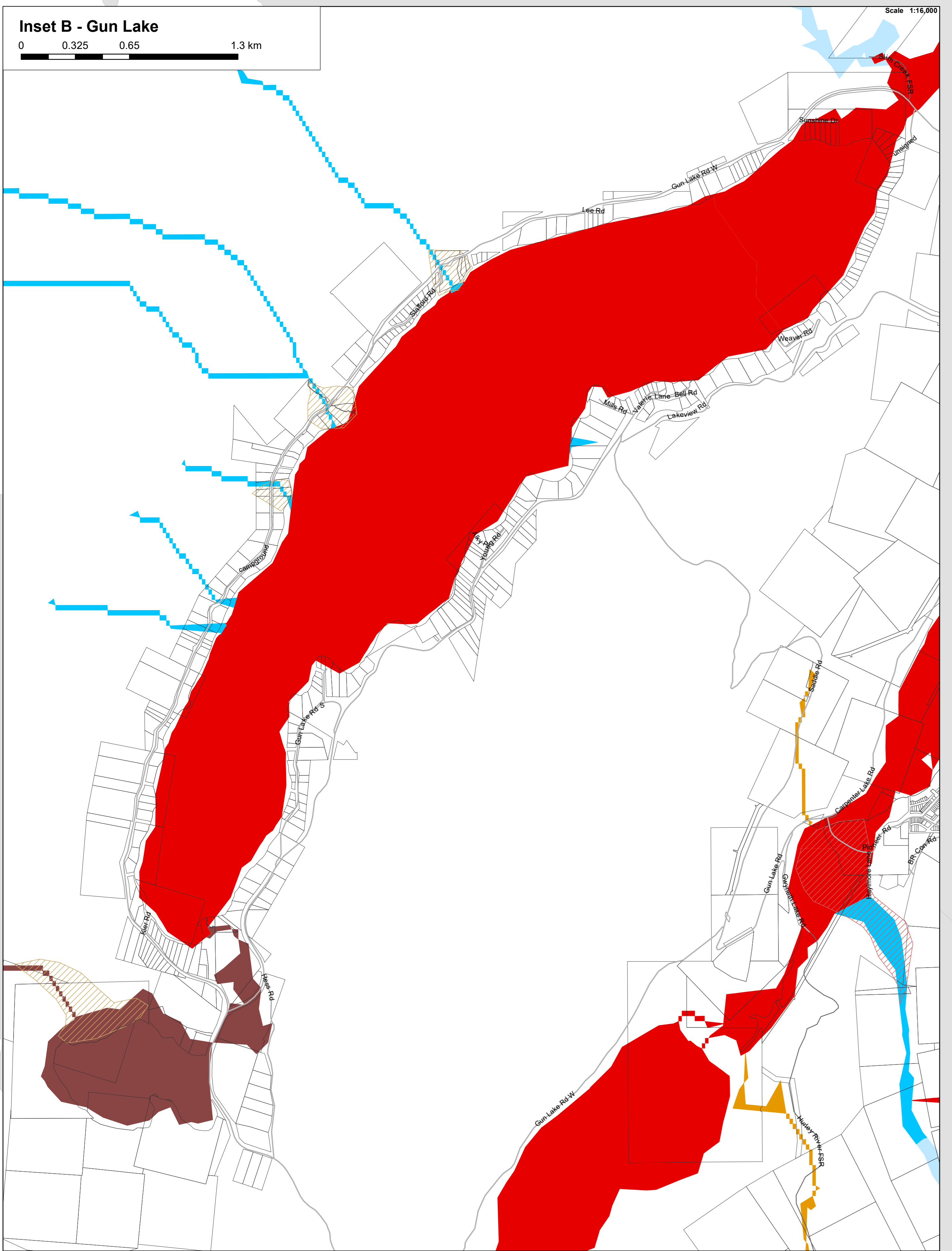
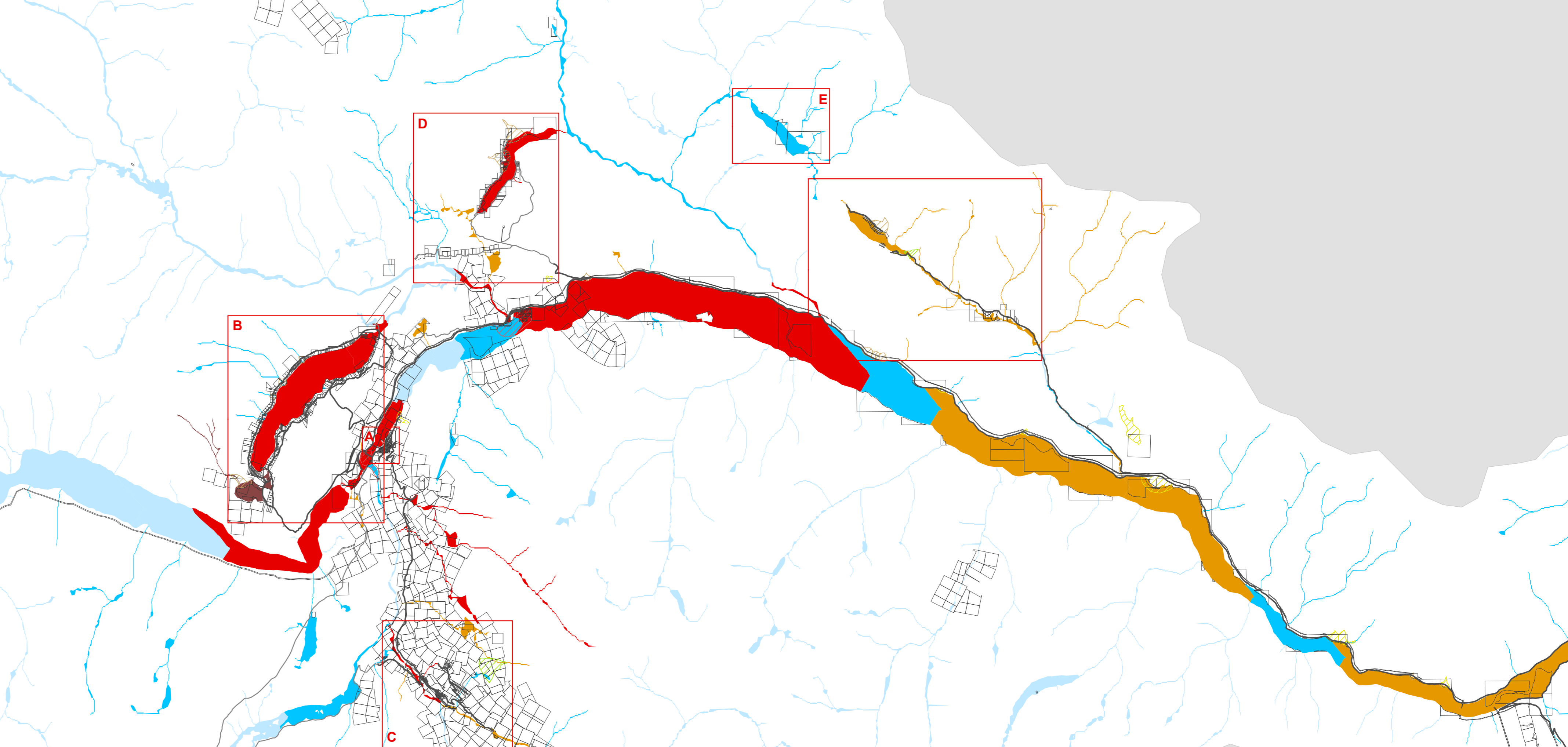
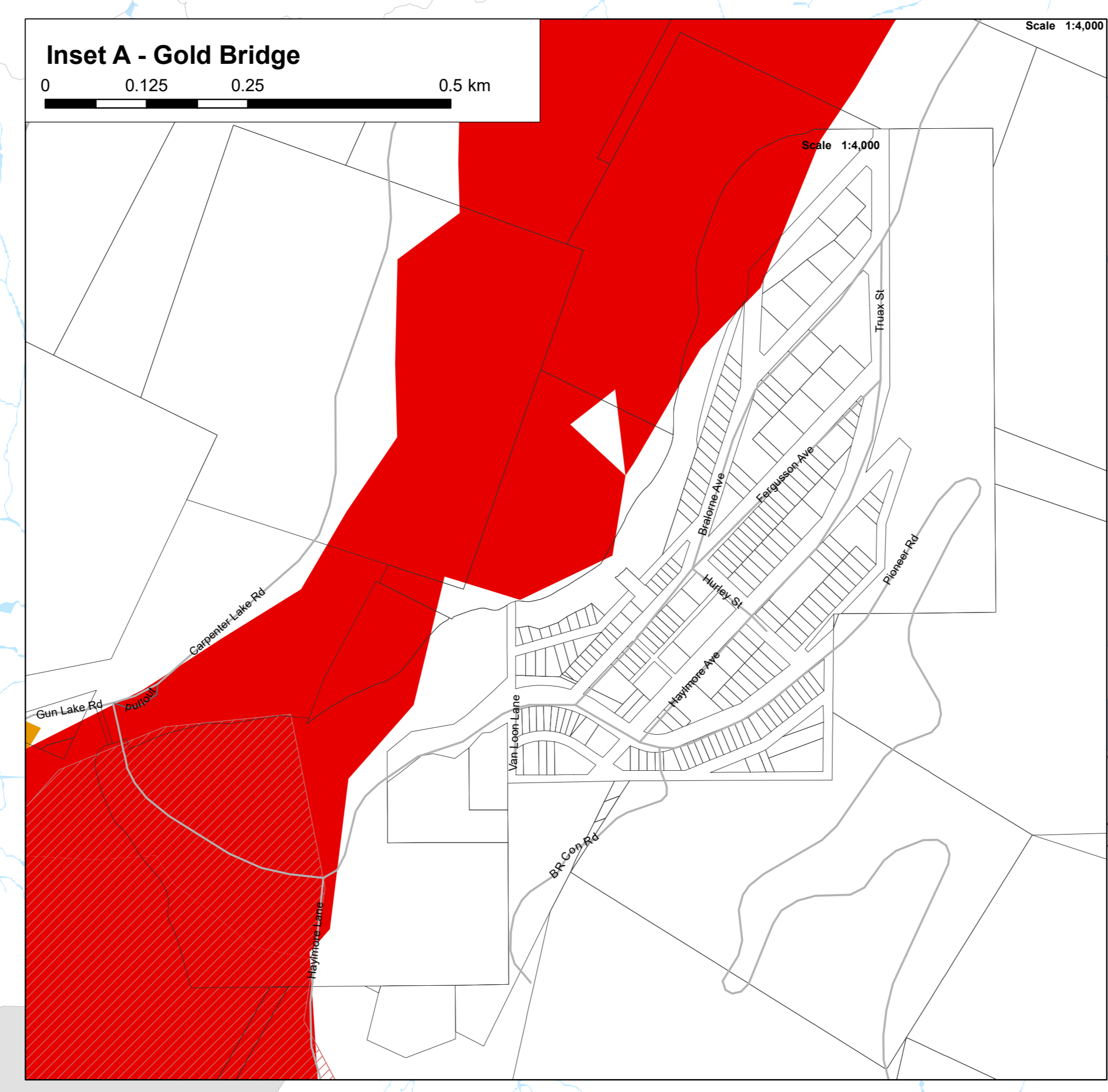
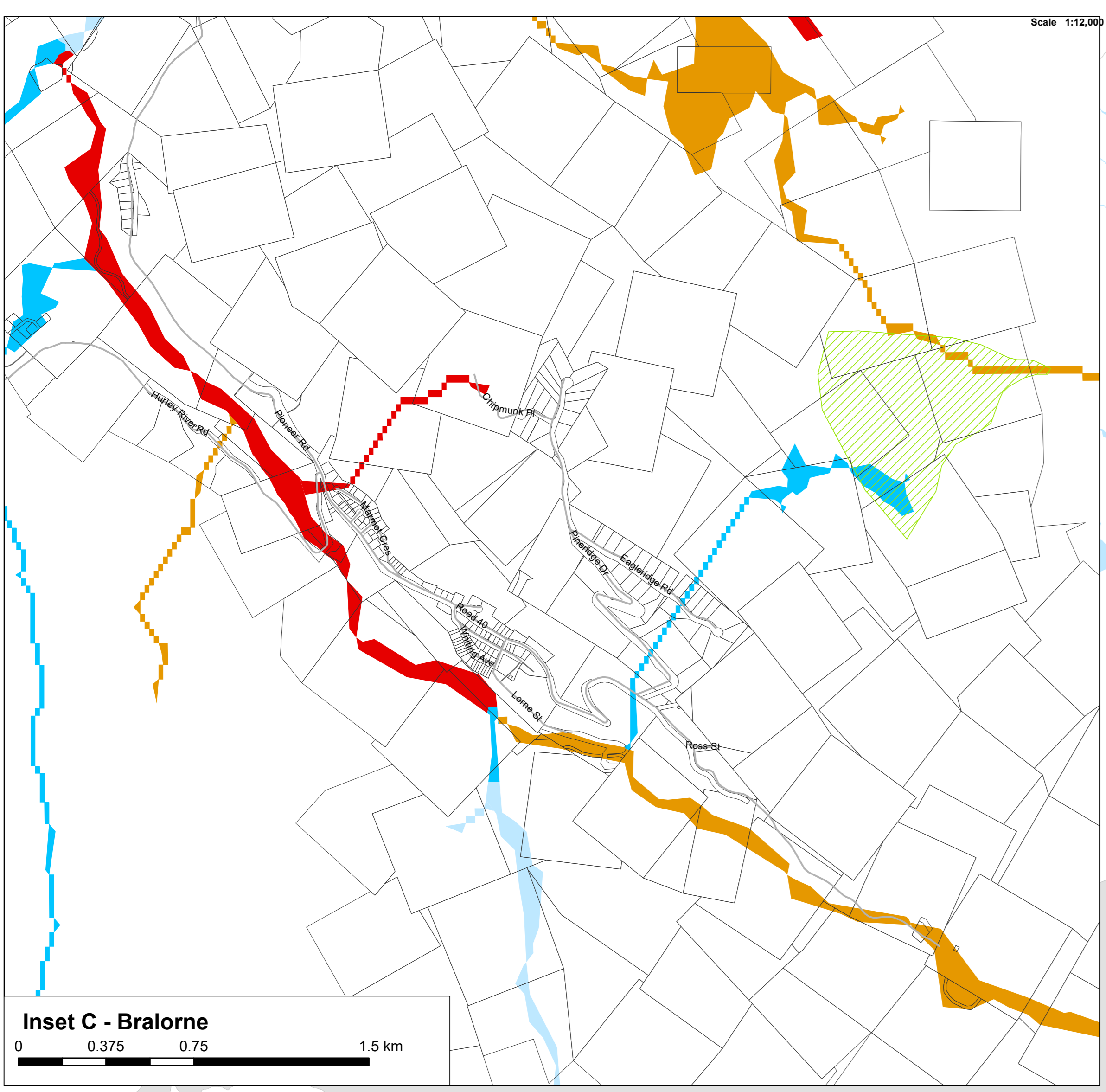
Designation


-  P&R, Park Rec and Open Space
-  RM, Resource Management

0 0.25 0.5 1 km

Scale 1:35,000




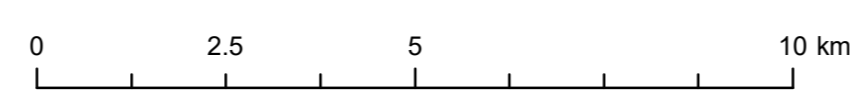



SQUAMISH - LILLOOET
 REGIONAL DISTRICT

Bylaw 1822-2023 | Map 10
Hazards

This map shows known hazards identified through the 2023 BGC
 Regional Geohazard Risk Assessment Report.


 Scale 1:100,000



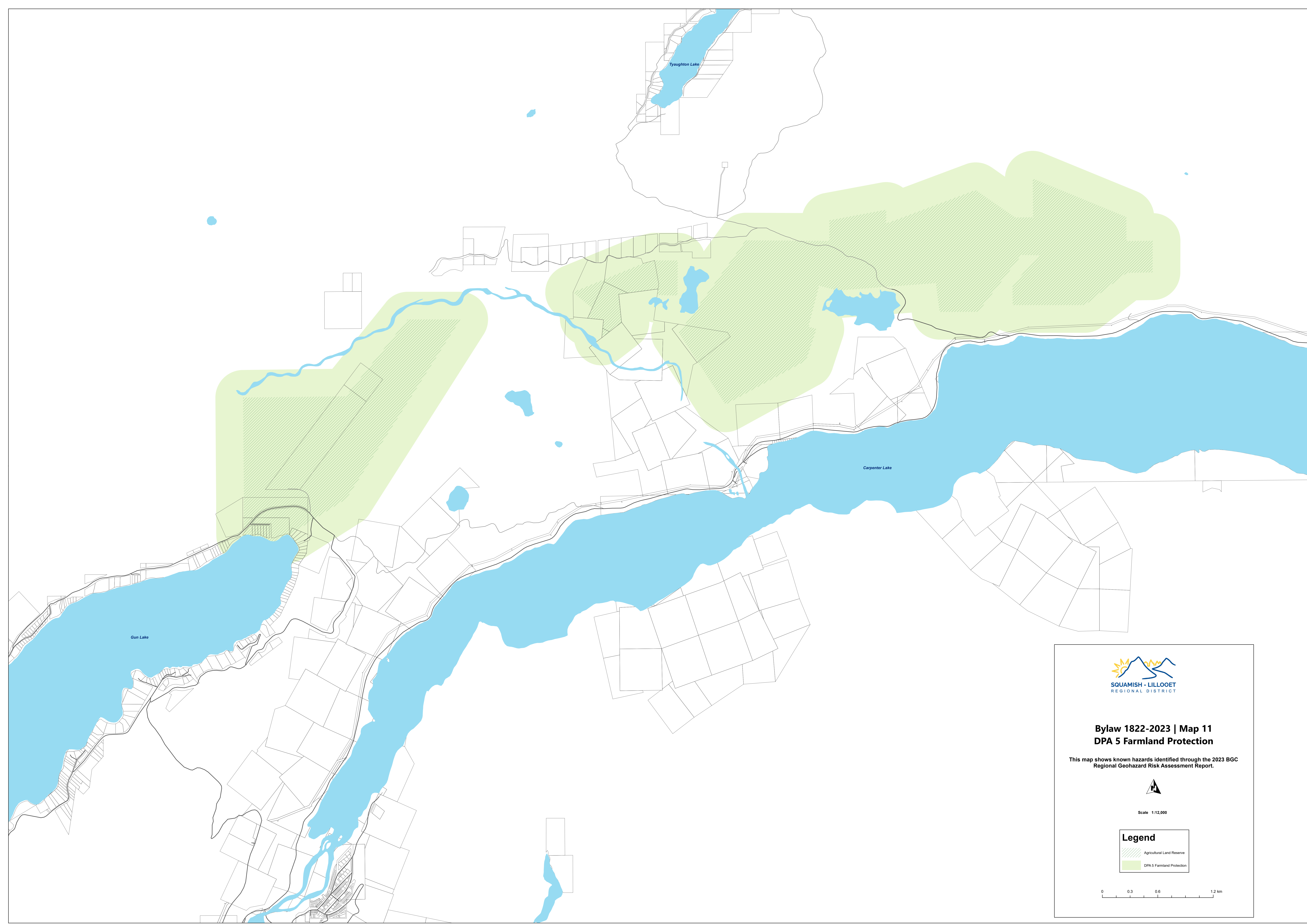
Legend

Steep Creek Hazard Exposure Rating

- Very Low
- Low
- Moderate
- High
- Very High

Clearwater Flood Hazard Exposure Rating

- Very Low
- Low
- Moderate
- High
- Very High



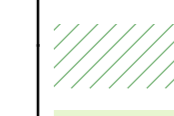
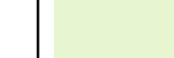
**Bylaw 1822-2023 | Map 11
DPA 5 Farmland Protection**

This map shows known hazards identified through the 2023 BGC
Regional Geohazard Risk Assessment Report.



Scale 1:12,000

Legend

-  Agricultural Land Reserve
-  DPA 5 Farmland Protection

